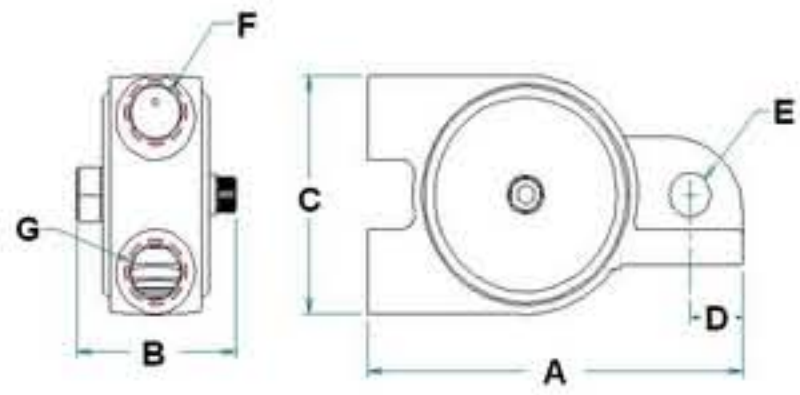


CVT-30



A	3-1/8" (7.9cm)	B	1-1/4" (3.2cm)
C	1-3/4" (4.4cm)	D	7/16" (1.1cm)
E	5/16" (.8cm)	F	1/8" NPT
G	1/8" NPT		

Weight

0.50 lbs.

Unbalance

.013 in-lbs (.017 cm-kg)

AIR CNSMP @ 80 psi ; 5.4bar

3.2 cfm ; 90.1 lpm

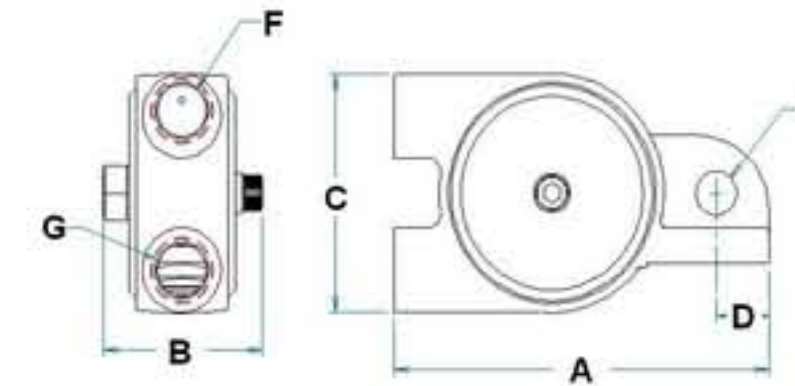
FREQ. @ 80 psi ; 5.4bar

16,890 VPM

Force @ 80 psi ; 5.4 bar

105.3 lbf (467.5N)

CVT-40



A	3-9/16" (9cm)	B	1-1/2" (3.8cm)
C	2-1/8" (5.4cm)	D	1/2" (1.3cm)
E	3/8" (.9cm)	F	1/8" NPT
G	1/4" NPT		

Weight

0.75 lbs.

Unbalance

.029 in-lbs (.038 cm-kg)

AIR CNSMP @ 80 psi ; 5.4bar

3.2 cfm ; 90.1 lpm

FREQ. @ 80 psi ; 5.4bar

15,690 VPM

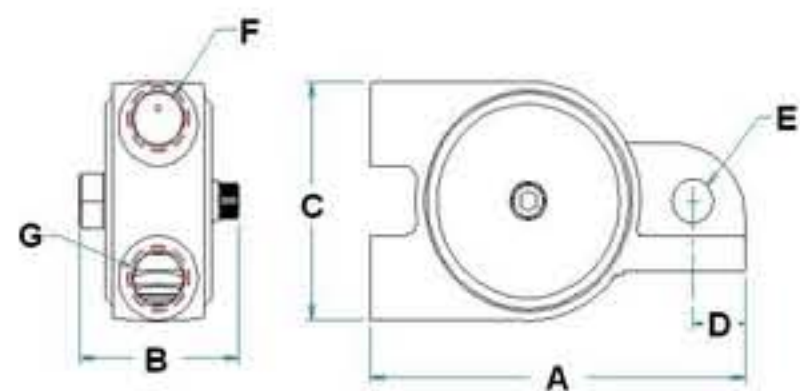
Force @ 80 psi ; 5.4 bar

202.8 lbf (900.4N)

上海欣帆机电科技有限公司
 电话: 021-62255510
www.shinfan.com



CVT-50



A	4" (10.2cm)	B	1-5/8" (4.1cm)
C	2-1/2" (6.4cm)	D	5/8" (1.6cm)
E	3/8" (.9cm)	F	1/4" NPT
G	1/4" NPT		

Weight

1.00 lbs.

Unbalance

.044 in-lbs (.052 cm-kg)

AIR CNSMP @ 80 psi ; 5.4bar

5.0 cfm ; 142.6 lpm

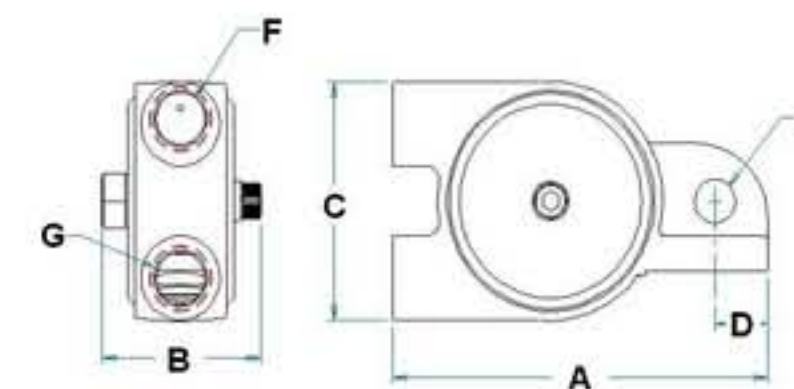
FREQ. @ 80 psi ; 5.4bar

14,560 VPM

Force @ 80 psi ; 5.4 bar

265 lbf (1,176.6N)

CVT-80



A	5-3/8" (13.7cm)	B	2-1/4" (5.7cm)
C	3-1/2" (8.9cm)	D	5/8" (1.6cm)
E	17/32" (1.4cm)	F	1/4" NPT
G	1/4" NPT		

Weight

2.50 lbs.

Unbalance

.194 in-lbs (.229 cm-kg)

AIR CNSMP @ 80 psi ; 5.4bar

5.2 cfm ; 147.9 lpm

FREQ. @ 80 psi ; 5.4bar

10,255 VPM

Force @ 80 psi ; 5.4 bar

579.4 lbf (2,572.5N)